

**DEVI CREST**  
VADGAON-MAVAL

**THOUGHTFUL  
LUXURY**









WE AT DEVI WELCOME YOU TO  
OUR LARGE FAMILY WITH  
**YOUR HOME AT DEVI CREST.**

DEVI CREST is nestled amongst the hills of Sahyadri, 20 minutes from Lonavala, towards Pune at Vadgaon Maval. Located on the old Mumbai-Pune Highway NH4 and with easy access to the Expressway, Railway Station, Airport, Talegaon MIDC, Chakan MIDC, Balewadi High Street, MCA Stadium, Balewadi Stadium, Hinjawadi, etc...

At DEVI, we don't just build structures, we build lasting relationships.

We build a heritage for you to pass on to your near and dear ones.



We have listened to you and have  
**THOUGHTFULLY DESIGNED**  
your home keeping  
**YOUR NEEDS** in mind.



**SAFE WATER**  
in your taps.



**WATER FILTRATION  
PLANT**  
for all water that  
touches the body.



**RECYCLED WATER**  
for flushing and  
gardening.



**LARGE GROUND  
WATER TANKS**  
Separate compartments  
for raw water (tanker /  
bore well), filtered water,  
RO water, kept in stock  
to be pumped to the  
building tanks.



**REVERSE OSMOSIS (RO)**  
for water to be used in  
the kitchen for drinking  
and cooking needs.



**WATER PRESSURE**  
designed system.



**WATER TANK ON  
BUILDING**  
Gravity feed water with  
separate compartments  
for everyday use, RO  
kitchen water, recycled  
flushing water and fire  
fighting.

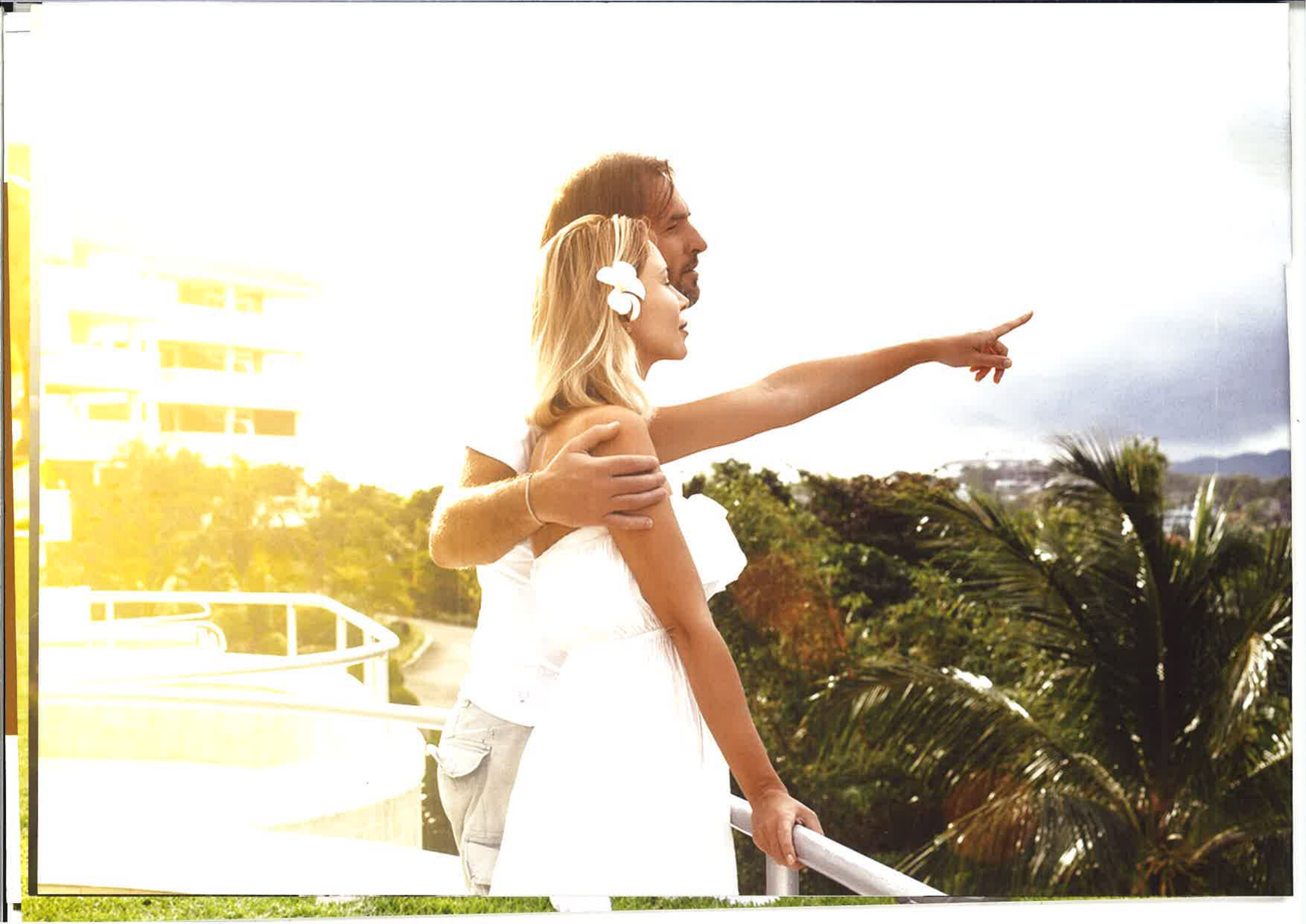


**RAIN WATER HARVESTING**  
with recharge pits to  
improve ground water  
levels.



**EFFICIENT STORM WATER**  
disposal.





We have **THOUGHTFULLY** taken care of seemingly minor details and incorporated them at

## **DEVI CREST.**



**MODERN LIFTS**



**AMPLE PARKING**  
for 2-wheelers.



**POWER BACK-UP**  
for Lifts and Common areas.



**LOW MAINTENANCE**



**ELECTRICAL SAFETY**  
Built-in safety with concealed copper wiring, miniature circuit breakers (MCB), earth leakage circuit breakers (ELCB), modular switches.



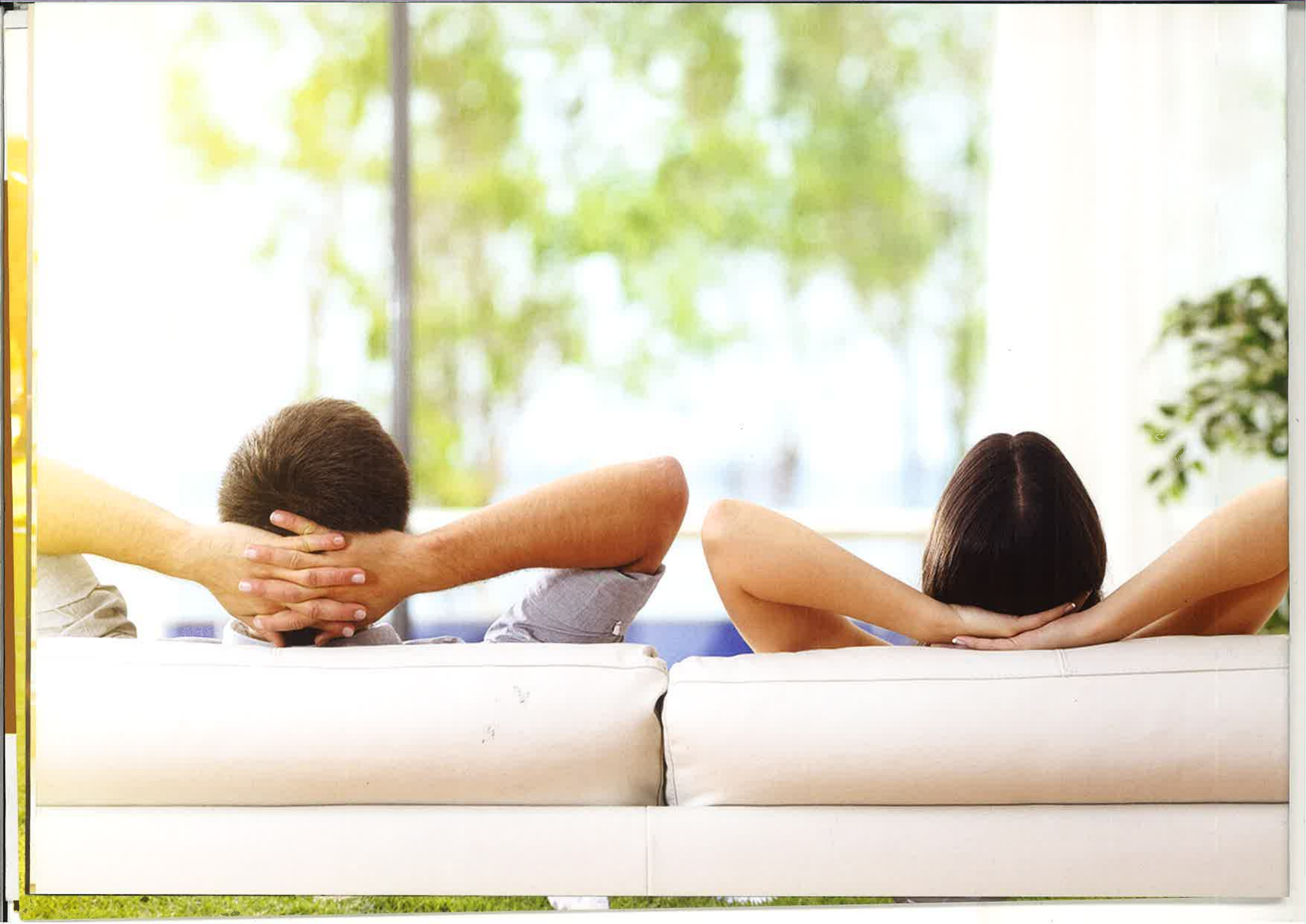
**GATED COMMUNITY**



**AMPLE PARKING**  
for 4-wheelers.



**QUALITY CONSTRUCTION**





Once you move in, it is a big inconvenience to install appliances, so we have a provision for them to be added effortlessly.

## SIMPLY PLUG N PLAY!



### **INVERTER**

We have already concealed the wires, all you need is to buy and install.



### **WATER PURIFIER IN KITCHEN**

Your kitchen becomes functional from day one. Water and electrical connections ready and in place.



### **AIR CONDITIONING**

The route is already fixed with provision for electrical connections, drain system, simply install and operate.



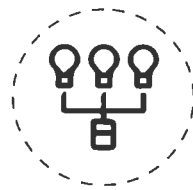
### **VIDEO DOOR PHONE**

Concealed connections done, simply plug n play.



### **WASHING MACHINE**

We have provided all the necessary electrical connections, water inlet and drainage connections, so you can start living from day one.



### **HOME AUTOMATION**

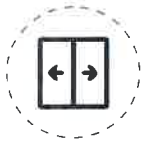
Space provided in modular switches, so you can easily automate your house without any additional work.



### **CHIMNEY IN KITCHEN**

Electrical point provided at the required level.

# OTHER HIGHLIGHTS



## ALUMINUM WINDOWS

Powder coated with insect netting and float glass for distortion free view, effortless sliding.



## INSECT NETTING

on aluminum windows.



**MAIN DOOR 40 mm**  
heavy doors.



**DESIGNER BATHROOMS**



**SINGLE LEVER MIXERS**  
for bathrooms.



## MORI WASHING PLACE

for larger needs, in the dry balcony.



**WIDE ROADS**



**LANDSCAPED GARDENS**



**WALKING TRACK**



**OUTDOOR PLAY AREA**





**SENIOR CITIZEN FRIENDLY**



**EARTHQUAKE RESISTANT STRUCTURE**



**OUTDOOR RECREATION**



**SOLAR HEATED WATER**



**GARBAGE DISPOSAL**



**ECO-FRIENDLY**



**CHILD-FRIENDLY BALCONY RAILING**

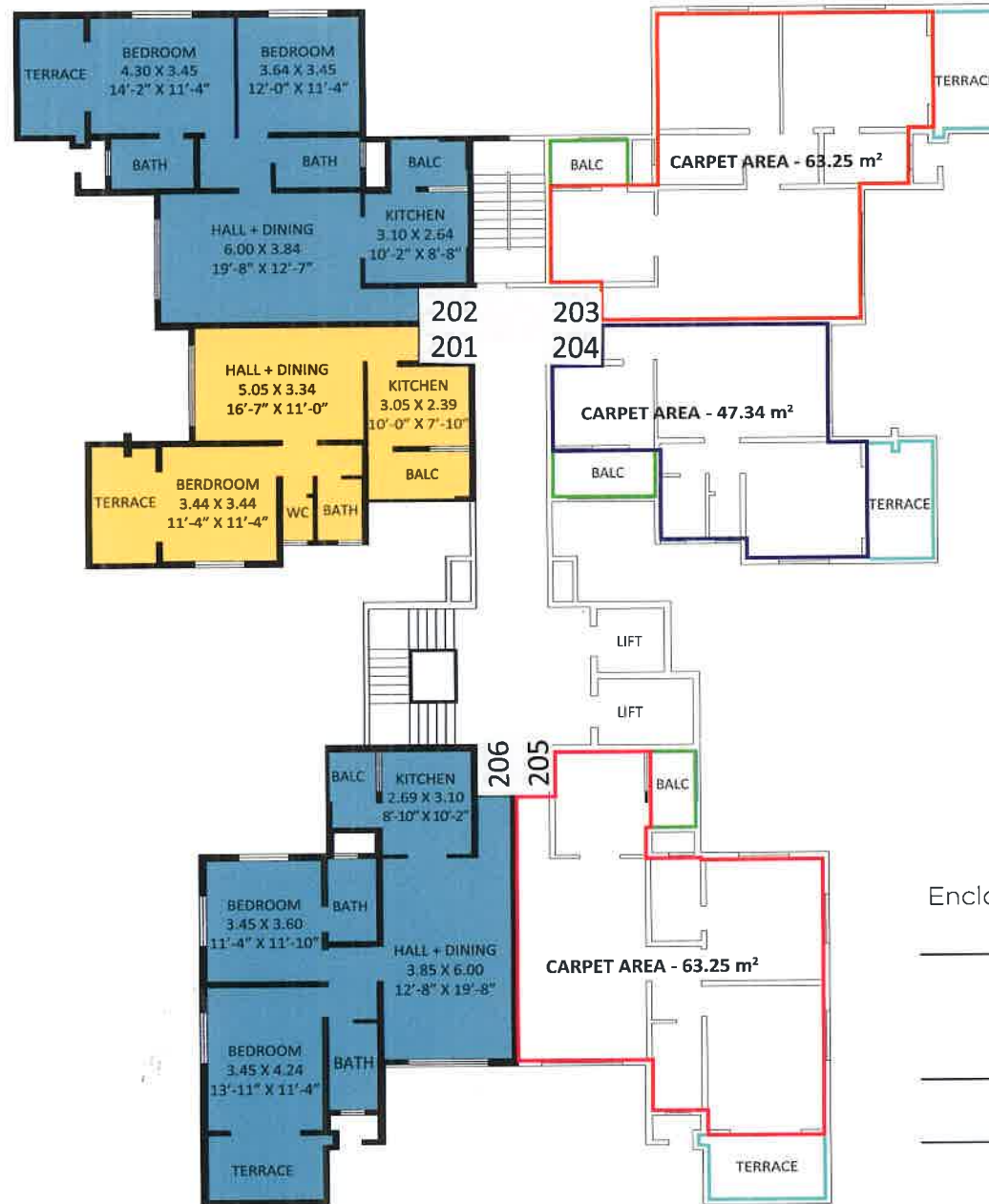


**COMMON TOILETS IN PARKINGS**

# BUILDING A1

## TYPICAL EVEN FLOOR PLAN

FOR FLOORS 2/4/6/8/10/12



**2 BHK**

Carpet Area - 63.25 m<sup>2</sup>  
Enclosed Balcony Area - 12.50 m<sup>2</sup>  
**Total (A) - 75.75 m<sup>2</sup>**

Terrace Area - 7.10 m<sup>2</sup>  
Balcony Area - 3.10 m<sup>2</sup>  
**Total (B) - 10.20 m<sup>2</sup>**

**Total (A)+(B) - 85.95 m<sup>2</sup>**



# BUILDING A1

## TYPICAL ODD FLOOR PLAN

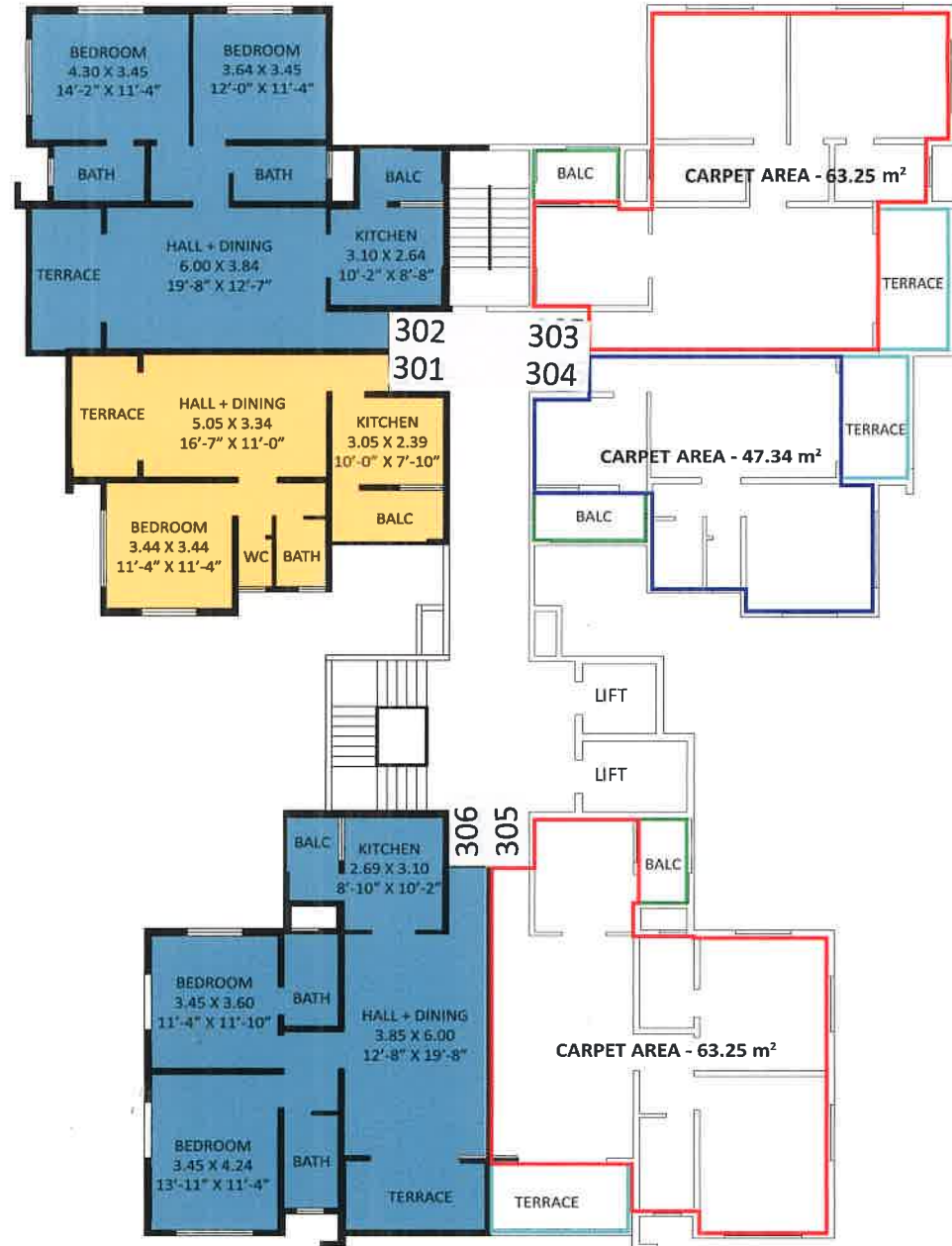
FOR FLOORS 3/5/7/9/11

**1 BHK**

Carpet Area - 47.34 m<sup>2</sup>  
 Enclosed Balcony Area - 0.00 m<sup>2</sup>  
**Total (A) - 47.34 m<sup>2</sup>**

Terrace Area - 6.00 m<sup>2</sup>  
 Balcony Area - 4.06 m<sup>2</sup>  
**Total (B) - 10.06 m<sup>2</sup>**

**Total (A)+(B) - 57.40 m<sup>2</sup>**





ISO 9001:2008 COMPANY

**DEVI Group has a legacy of over 60 years in building construction with operations ranging from,** as government contractors to private, industrial and residential design and developments.

**The Group's diverse portfolio with the management's hands-on experience and personnel expertise has successfully delivered simple to complex industrial structures, affordable and luxury housing, small societies to large townships, making DEVI a favorite among Architects and Customers alike.**

Silent leadership qualities with numerous 'Industry firsts', and recognized by the building fraternity by having conferred numerous awards, year after year, bears testimony to the quality, reliability, dedication to customer satisfaction and the sensitivity and success of the DEVI Group.

We at DEVI firmly believe that long term success can only come from mutually satisfying relationships with our clients, a trust that we continuously enhance by responding to the customer's needs quickly, effectively, transparently and economically.

In 1997, DEVI was the first Construction Company in Pune to be certified with the ISO Quality Management System by DNV and the only Group worldwide with both companies, undertaking diverse Real Estate Developments and Industrial Construction, on the same certificate for 'Design Development, Site Development, Contracting and Construction of Residential and Commercial Complexes and Contracting, Site Development and Construction of Industrial Complexes'.

**At DEVI, we don't just build structures, we build lasting relationships. We build a heritage, for you to pass on to your near and dear ones.**

DEVI Group includes the Dev Prabhu Charitable Trust, which over the last 50 years, as a CSR initiative, has contributed to various charitable organizations, institutions and individual causes. These have been primarily for medical aid, education and rehabilitation, besides helping with fund raising.



# SOME OF OUR COMPLETED PROJECTS

## RESIDENTIAL & COMMERCIAL

- DEVI Chambers
- DEVI Cool
- DEVI Deep
- DEVI Indrayani
- DEVI Link
- DEVI Lotus
- DEVI Orchid
- DEVI Retreat
- DEVI Shelter
- DEVI Valley
- Empress Court
- Empress Towers
- Festival Apartments
- Hill View Residency
- ICC-DEVI Gaurav Technology Park
- Marble Arch
- Ramayanagari
- Sacred Heart Town
- Sacred World
- Sarvodaya Housing Complex
- Shanta Nilketan
- Silver Gates
- Silver Key
- Silver Valley
- Silver Woods

## INDUSTRIAL

- Mercedes Benz
- Bosch Ltd.
- INA Bearings
- Endress + Hauser Flowtech
- Wirtgen India
- Jabil Circuit
- Cybage Software
- Brintons Carpets Asia Pvt. Ltd.
- TBK India

\*More than 100 completed projects.

# PRESTIGIOUS AWARDS



**AESA Award, 1998**

Innovative & Unique Creation of Township Sacred Heart Town



**BAI Birla Award, 2006**

Super Well Built Structure  
TGL Carraro



**BAI Award, 2008**

Well Equipped, Well Mechanized Site  
BOSCH Limited



**Builders Association of India, 1998**

Quality & Speed  
Abicor, Urwade



**Builders Association of India, 2006**

Excellence in Commercial Building  
Sacred World, Wanawadi

**BAI Best of Best Award, 2007**

Well Built Structures  
INA Bearings

**Builders Association of India, 1999**

Best Industrial Project  
Brinton Carpets, Urwade

**Builders Association of India, 2006**

Best of the Best  
Turbo Gears, Ranjangaon

**BAI Award, 2008**

Industrial Large Scale  
Mercedes Benz

**Builders Association of India, 2004**

Well Built Structure  
Cybage Software, Kalyani Nagar

**Builders Association of India, 2012**

Well Equipped, Well Mechanized Site  
BOSCH Limited, Nashik

# CLIENT TESTIMONIALS

“

**Mercedes Benz India Pvt. Ltd.**

The facility was completed on time and within budget and we are satisfied by the quality of service provided by them.

**Dr. Wilfried Aulbur, Managing Director & CEO**  
**Piyush Arora, Director Technical**

”

“

**INA Bearings India Pvt. Ltd.**

Devi Construction Co. Pvt. Ltd., have completed and handed over the project to us to our satisfaction.

**Alexander Strauss, General Manager - Technical**  
**Ramesh Chavan, General Manager - Plant Engineering**

”

“

**Godrej-GE Appliances**

We at Godrej-GE have appreciated the care and commitment shown by your organisation towards this project of ours, and would like to thank each of the individuals for this achievement, and for the respect and honour shown to us as an organisation. We respect this relationship, and would continuously further it in future.

**V.M. Crishna, Managing Director**

”

“

**Hafeez Contractor, Architect**

This is to certify that we have worked together with Devi Construction for the project of the Guest House for Damania Airways at Ahmednagar. Throughout the venture we found them extremely co-operative and reliable. We are satisfied with their workmanship and would like to work with them again.

**Architect Hafeez Contractor**

”

“

It has been a pleasure dealing with M/s Devi Construction Co. & its staff. We recommend M/s Devi Construction Co. to everyone for good quality of construction work.

**Mr Dhiren Bhatia**

”

“

We were very happy with the final look of the house. We have been serviced very efficiently. Thank you to the entire team of Devi Construction.

**Mr Deepak Samtani**

”

“

We have been very happy in our dealings with Devi Construction and the team is very responsive. We have had numerous interactions with the site team and they were very polite and helpful. We have recommended Devi Construction to our friends and family.

**Mr Samir Pradhan**

”



# LOCATIONAL ADVANTAGE



20 minutes' drive from Lonavala, the place is an ideal holiday home destination, being close to several tourist spots, historic temples and cosy hill stations as well.



Just a stone's throw away from Maharashtra's rapidly expanding growth corridor, Vadgaon Maval is scenic and resting 2198 FT above sea level, offering pleasant weather any given time of the year.



And this natural abundance is complemented by 360 degree connectivity – located 100 km from Mumbai on the old Pune-Mumbai Highway (NH4), the place offers convenient access to the Pune-Mumbai Expressway and is just 45 minutes from lifestyle avenues at Balewadi High Street, Pune. With two proposed international airports within driving distance, DEVI CREST at Vadgaon Maval holds great promise of high returns.



Naturally, Vadgaon Maval was the perfect choice for Devi Constructions to deliver yet another milestone in Thoughtful Luxury – DEVI CREST.

# LOCATION MAP





AN ISO 9001 COMPANY

**DEVI**  
**CONSTRUCTION CO.**  
CIVIL ENGINEERS AND BUILDERS

DEVI House, 37 Shivajinagar,  
Pune 411 005.  
Tel: +91 20 25535 020  
Fax: +91 20 25533 231  
info@deviprojects.com  
www.deviprojects.com

**SALES OFFICE**

Darshan Apartments, Sadhu Vaswani Path ,  
Pune 411 001.  
Tel: +91 20 26122 304 / 26122 340  
Mobile No. +91 98230 55717  
sales@devigroup.com  
www.devigroup.com

**DEVI CREST**  
VADGAON-MAVAL

S. No. 135, Vadgaon Maval,  
Pune 412 106.  
www.devicrest.com



RERA REGISTRATION NO P52100003935  
maharera.mahaonline.gov.in



ISO 9001:2015